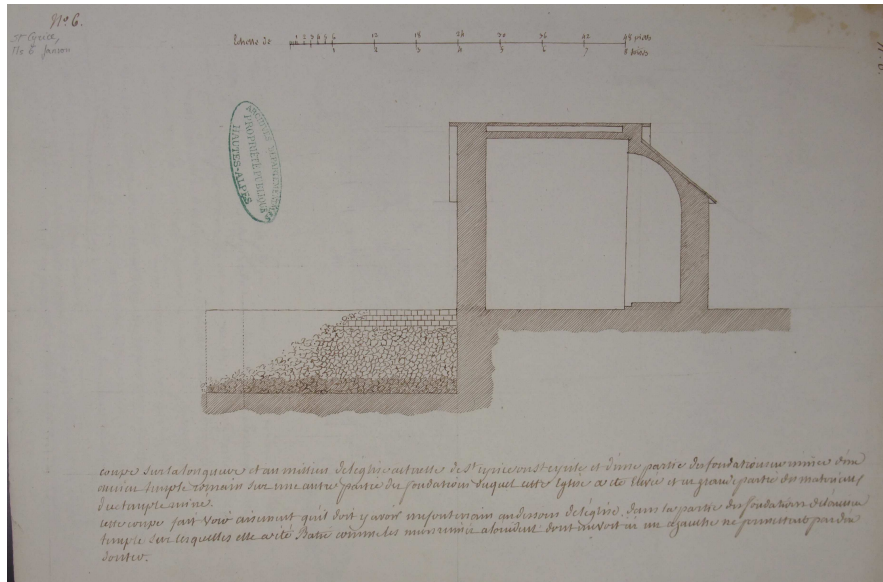
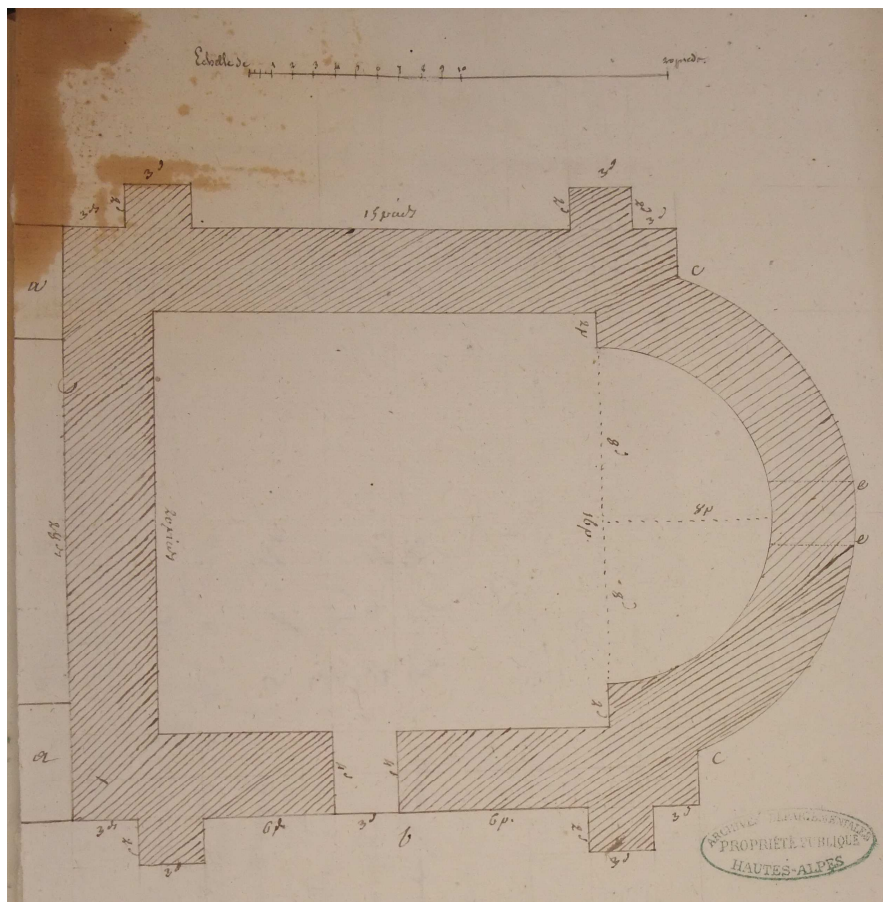


# Annexe 1 - Eglise de Saint-Cyrice – dessins et plans

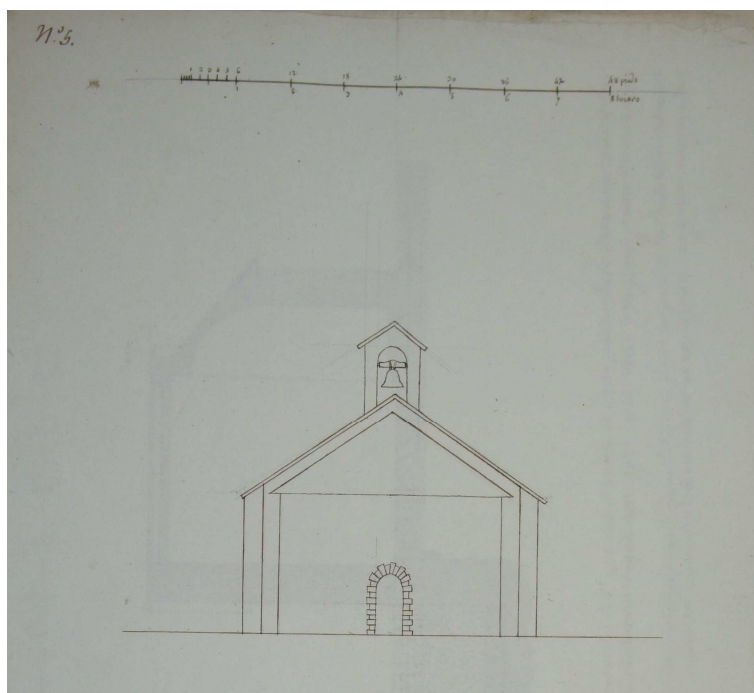
## Les dessins de Jansons des Fontaines (1825) – AD Hautes-Alpes



**Vue en coupe  
de l'édifice**



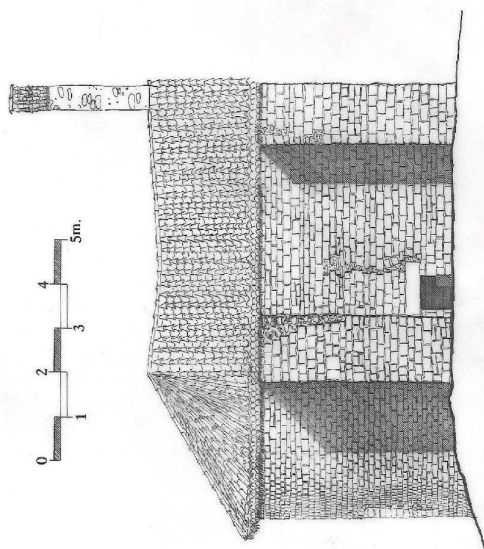
**Vue en plan  
de l'édifice**



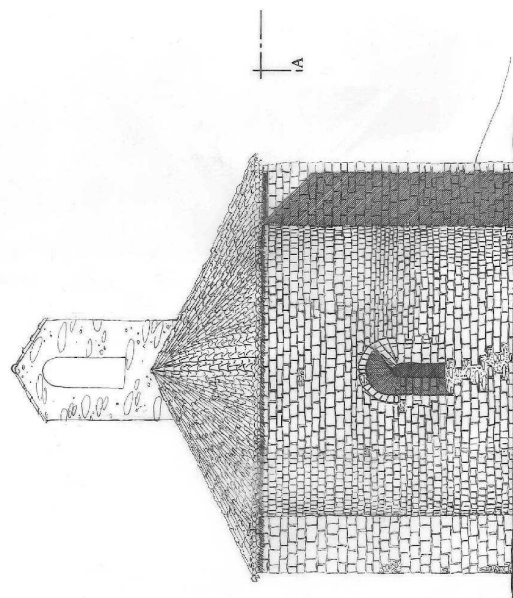
**vue de la façade de  
l'édifice**

# Les relevés contemporains de l'édifice (1984)

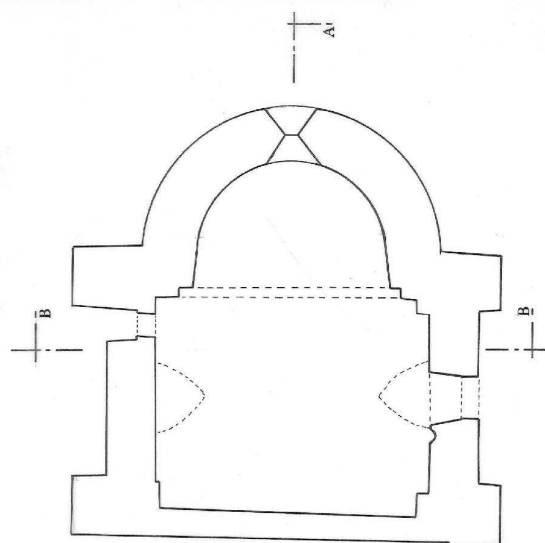
## Eglise de St. Cyrice



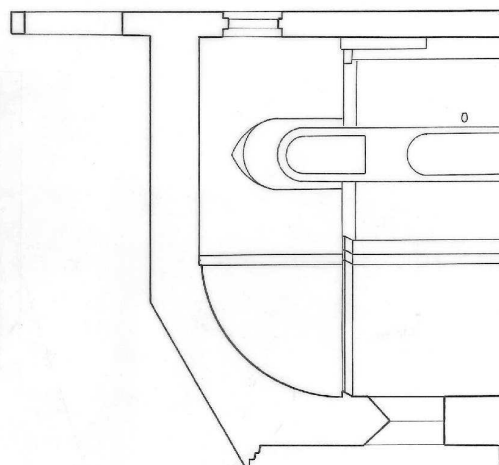
FACADE NORD



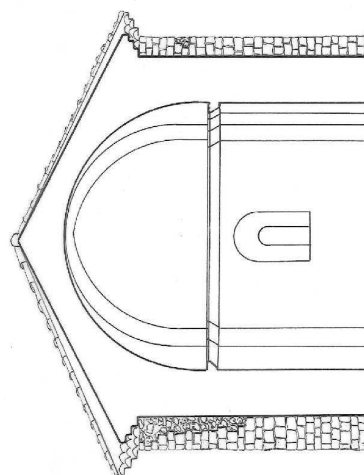
FACADE EST



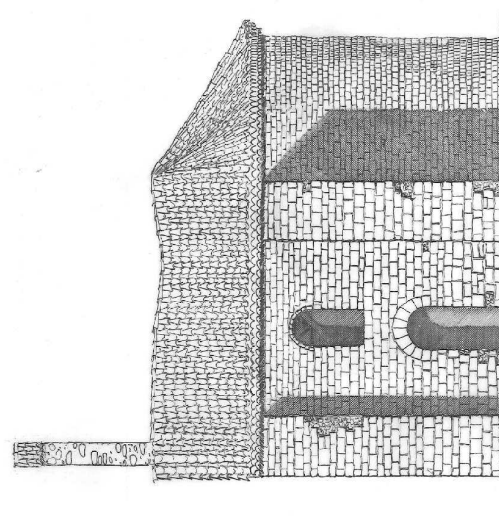
PLAN



COUPE A.A



COUPE B.B



FACADE SUD